

City of Cornwall Recreation Master Plan Update

Current Opportunities for Input

The City of Cornwall Recreation Master Plan is currently in draft form and on the City's website: www.cornwall.ca/en/play-here/recreation-master-plan-update.aspx

This information package provides a summary of the plan and selected recommendations. We encourage all readers to review the full Master Plan for additional detail.

Public and stakeholder consultation is critical to ensuring that the Plan responds to community needs. We want to your feedback on the draft recommendations and how we can improve public spaces and services for future generations.

Residents and local organizations can provide their input online by completing a feedback form found at: www.surveymonkey.com/r/CornwallDraftRecreationMasterPlan

Additional written comments can also be emailed directly to the City through the project website: www.cornwall.ca/en/play-here/recreation-master-plan-update.aspx

The input deadline is **March 7, 2021**. Unfortunately, in-person consultation is not possible due to current COVID-19 health guidelines.



About the Recreation Master Plan Update

The City of Cornwall Recreation Master Plan provides a ten-year guide for enhancing recreation programs, facilities and parks.

It builds on the Master Plan prepared in 2009, aligns with Council’s strategic priorities, and will be implemented in conjunction with the City’s Official Plan, Waterfront Plan, and related studies.

Founded on public input and research, the Master Plan is an actionable strategy that can readily adapt to changes in the community and emerging trends.

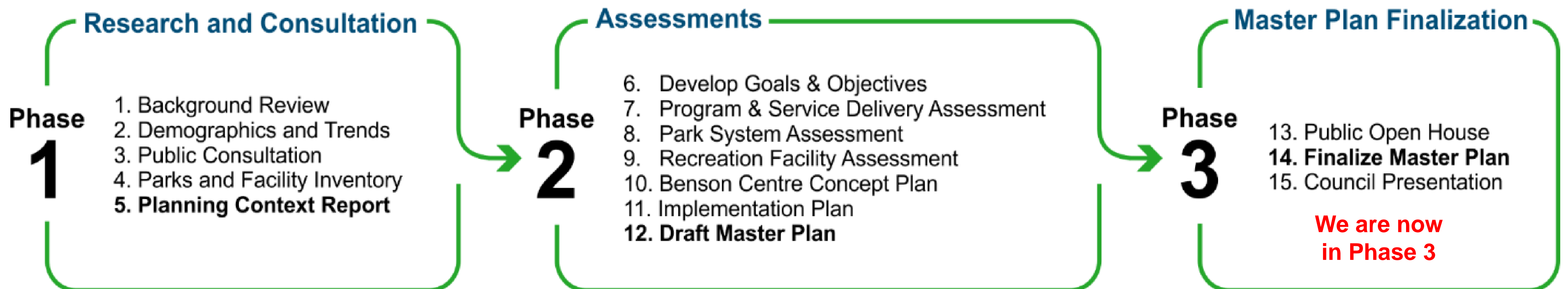
It will assist the City and stakeholders in making strategic investments to ensure a healthy community, improve the quality of life for residents, and encourage a strong economy and sustainable environment.

The Plan has been prepared with the assistance of Monteith Brown Planning Consultants.

The Master Plan explores the following topic areas:

- **Programs and services**, such as drop-in and registered activities, affordable access, staffing, and communications;
- **Indoor and outdoor recreation facilities**, such as sports fields, playgrounds, courts, pools, and arenas; and
- **Parks and open spaces**, from smaller neighbourhood parks to larger community parks such as Guindon Park.

Master Plan Phases



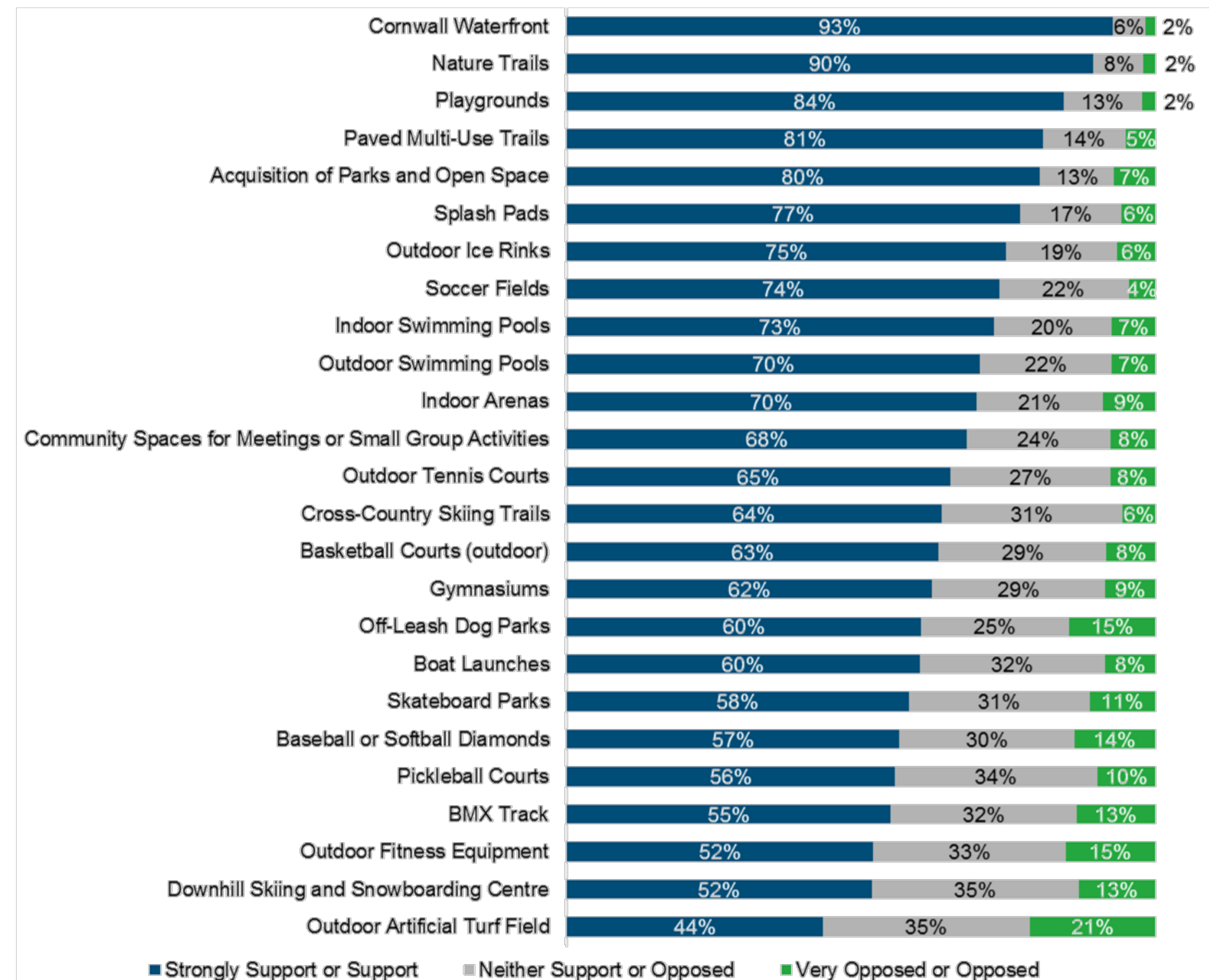
What we have Heard So Far

Public consultation is vital to this planning exercise. In 2020, more than 1,500 households (representing over 4,500 residents) completed the community survey and 30 local organizations provided input on their needs.

Key findings of the initial public engagement and research phase

- a) Recreation and parks services are very important to Cornwall residents.
- b) The pandemic has highlighted the vital role of parks and trails in staying active and connected.
- c) Demand is growing for unstructured activities for all ages.
- d) Affordable recreation opportunities are in demand.
- e) Many residents are not aware of the broad range of available activities.
- f) Maintaining existing facilities is a priority over adding new ones.
- g) We need to be creative in accommodating emerging sports and activities.
- h) Cornwall's waterfront is its best asset and public use should be maximized.
- i) The new arts and culture centre will fill a long-time need.
- j) Partnerships can be effective at leveraging resources and building capacity.
- k) The City needs to be proactive in order to maximize value for its residents.

Support for Public Spending on Constructing or Improving Parks and Recreation Facilities

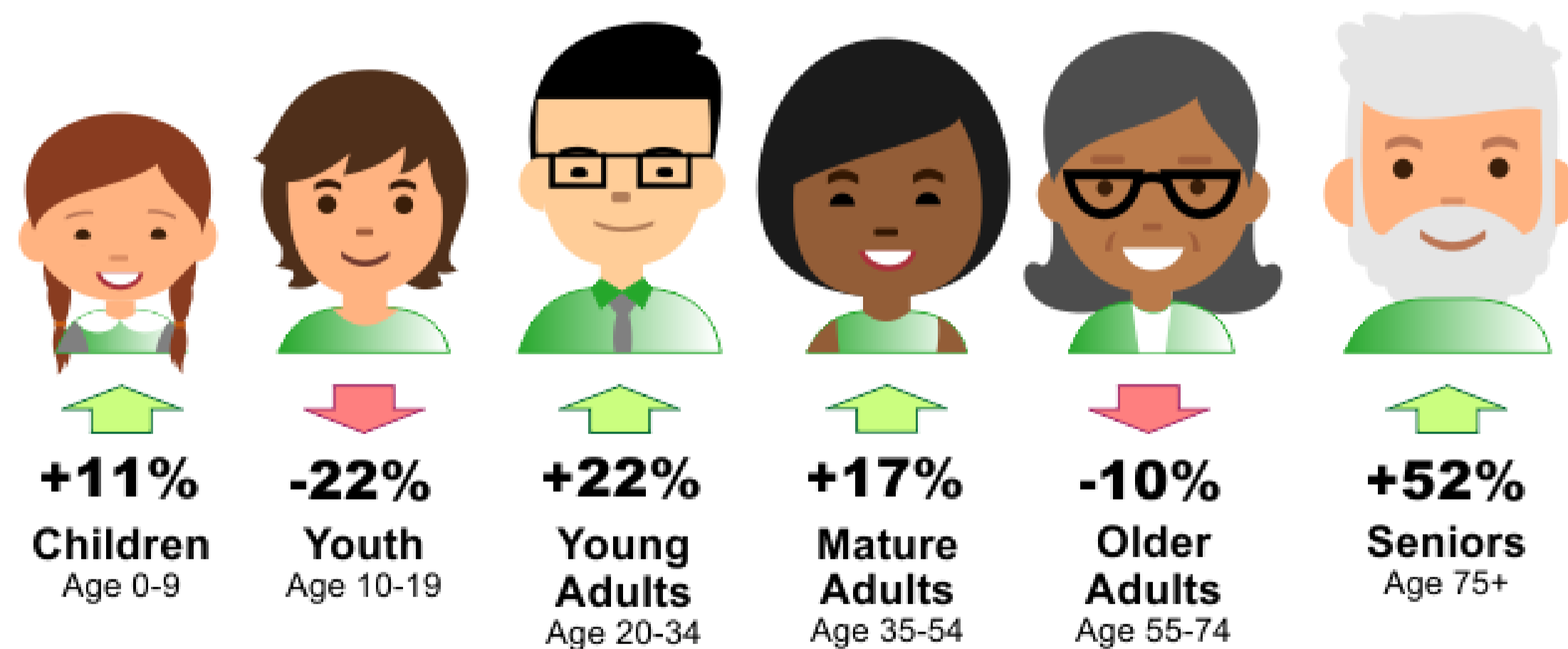


Community Context

Like most communities, Cornwall's population of 48,6000 residents is aging, although the city's growth potential means that it will also attract new families and newcomers. Over the next ten years, the City is forecasted to grow by 3%, reaching 50,170 residents by 2030 and 51,000 by 2037. (Source: Statistics Canada Census & 2017 Development Charges Background Study)

With a median age of 46.6 years (2016 Census), older adults and seniors over the age of 55 represent the largest demographic group in Cornwall and growth among this segment will continue.

Population Projection by Age Group 2020 - 2030



Note: Age cohort projections are based on the proportions identified in the Municipal Comprehensive Review (City of Cornwall, 2014) and Population and Growth Projections (United Counties of Stormont, Dundas and Glengarry, 2013), adjusted to match the total forecasted population from the City's 2017 Development Charges Background Study.

The median household income in Cornwall is lower than the median in the United Counties (2016 Census). More than one-quarter (26%) of Cornwall residents live below the low-income measure (after-tax), emphasizing the need to provide affordable opportunities for all residents, regardless of income.



Master Plan Strategic Framework

Based on supporting documents and public input, the following **vision, mission, priority areas, and goals** have been established to guide the development and implementation of this Master Plan.

Vision for Recreation and Parks

Accessible and high quality recreation and parks services that enable residents of all ages to lead healthy, active lives.

Departmental Mission

To respond to our unique community needs by working strategically and collaboratively in the delivery of recreation and parks services. We will seek to improve community wellbeing in all we do.

Priority Area	Goals
1. Active Living We will support opportunities for physical activity, wellbeing and social connectedness.	a) reducing sedentary behaviours b) engaging people of all ages c) encouraging unstructured play
2. Inclusion & Access We will remove barriers to participation and provide access for all.	a) removing barriers to participation b) promoting equity and access for all c) ensuring affordability
3. Connecting People & Nature We will support initiatives that encourage residents to get outside and enjoy our parks and natural spaces.	a) providing appropriate and renewed parks, open spaces and trails b) enhancing outdoor programming and education c) embracing environmental stewardship
4. Supportive Environments We will invest strategically in parks and facilities to support demonstrated community needs.	a) providing appropriate and renewed recreation and sport facilities b) designing with flexibility and multiple uses in mind c) aligning with community initiatives
5. Recreation Capacity We will collaborate with others and leverage resources to build capacity and be accountable to our residents.	a) building staff capacity (training, policies) b) broadening community awareness c) strengthening partnerships and capacity building

Programs and Service Delivery – Selected Recommendations*

*Please see the Draft Master Plan for a full list of all recommendations

Programming

Expand **drop-in programming** (e.g., sports, fitness, and arts) to enable residents of all ages to lead healthy, active lives. (rec. #3)

Emphasize affordable **registered programming** opportunities for under-served groups, including children/youth, older adults, persons with disabilities, and low-income households. (rec. #3)

Support **expanded park use and programming**, including outdoor play opportunities. (rec. #5)

Develop a **Long-Range Youth Plan** to maximize youth participation, leadership, and engagement. (rec. #6)

Affordability

Increase promotion and funding of the City's **Recreation Financial Accessibility Policy**. (rec. #8)

Prepare a **User Fee Study** to establish a fair, equitable and transparent process for setting recreation and parks fees. (rec. #9)

Continue to offer free swimming opportunities and consider the costs and benefits of **removing the fee for all public swimming hours at outdoor pools**. (rec. #10)

Policies and Supports

Review and expand the **Ice Allocation Policy** to other facility types, while ensuring that fair and transparent access to facilities is afforded to all priority groups. (rec. #13)

Develop a five-year outlook for recreation and parks **staffing and operations levels**. (rec. #16)

Reinstitute the **Recreation Advisory Committee** (expanded to include “Parks”) to assist in implementing the Master Plan and advising on matters within their mandate. (rec. #18)

Utilize and enhance **marketing and communication tools** to promote and gather feedback on recreation and parks services and initiatives, with an emphasis on leveraging new technologies and social media. (rec. #19)

Host regular **workshops and information sessions** with local organizations and service providers to enhance community awareness and discuss topics of interest. (rec. #20)

Consider **partnerships and sponsorship opportunities** to reduce reliance on tax dollars in providing quality recreation and parks services in Cornwall. (rec. #22)

Facilities – Selected Recommendations*

*Please see the Draft Master Plan for a full list of all recommendations

Indoor Facilities

Explore options to add a multi-purpose room and upgraded change room to the **Cornwall Aquatic Centre**. (rec. #26)

Add a **gymnasium to the Benson Centre** to accommodate additional court sports, activities and events. (rec. #28)

Continue to work collaboratively with the arts and cultural community to realize the vision for the **Cornwall Arts and Cultural Centre**. (rec. #30)

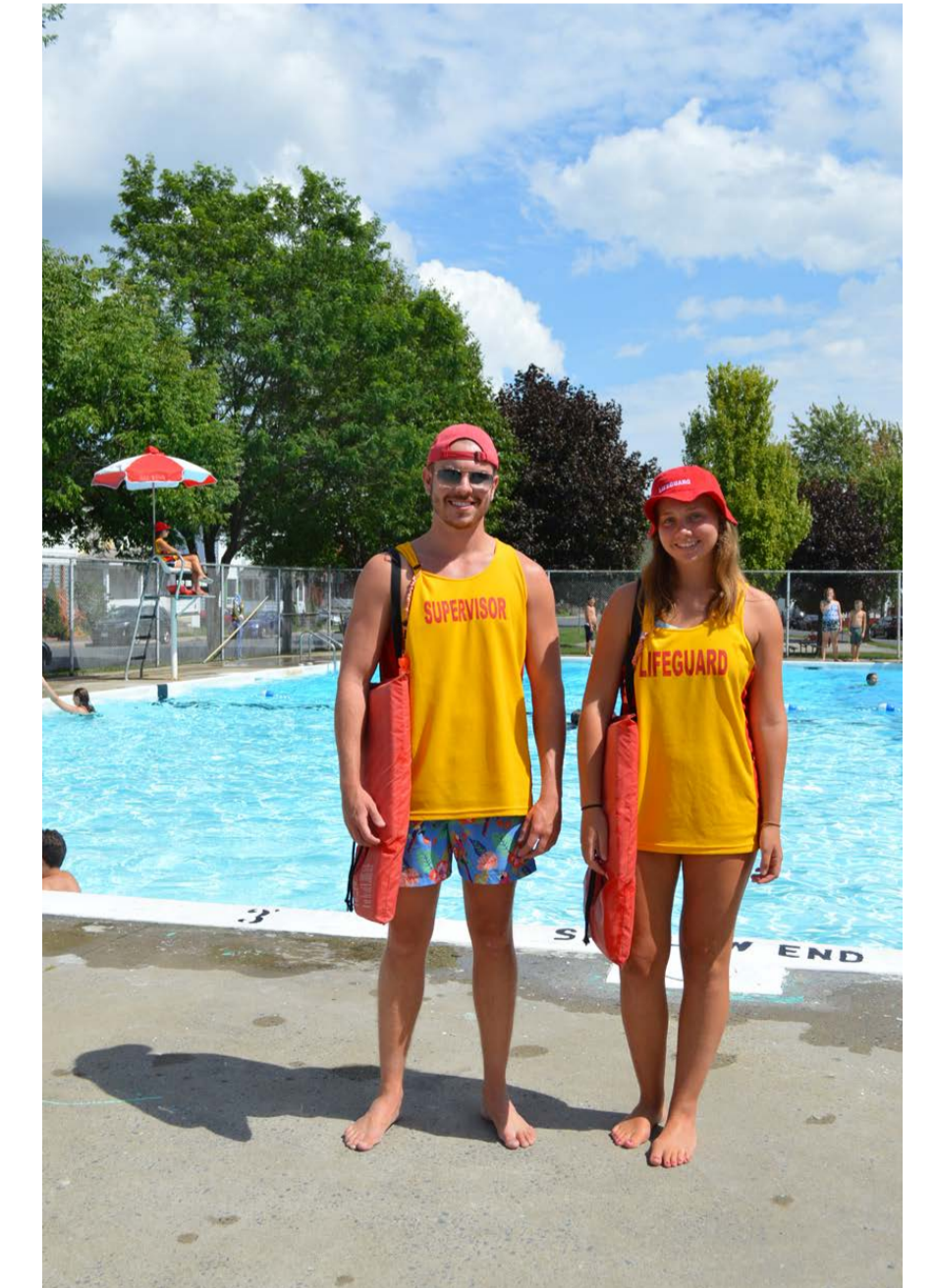


Outdoor Pools

Initiate an **outdoor pool enhancement and redevelopment program**, with a focus on **Mattice, St. Francis and Reg Campbell pools**. Over time, these pools should be enlarged or redeveloped to provide multi-functional designs with beach entry, water features, accessible changerooms, more deck space, shade, heated water, modern mechanical systems, etc. (rec. #46)

At such time that they become cost prohibitive to repair, **repurpose St. Joseph and Terry Fox pools** to other park amenities. The City's ongoing structural audit will provide additional information to guide investment decisions. (rec. #47)

Consult the community further regarding the outdoor pool recommendations, along with the location and design of redeveloped pools. (rec. #48)



Facilities – Selected Recommendations*

*Please see the Draft Master Plan for a full list of all recommendations

Sports Fields

Improve **ball diamonds in Adams and Broadview Parks** to accommodate youth play. (rec. #36)

Continue to explore and evaluate long-term options for **developing ball diamonds on the lands adjacent to the Benson Centre** and relocate youth play from the Legion / Pointe Maligne Park fields. Ongoing consultation with users and the community is required, as is a concept plan (underway) and business plan to assess potential cost impacts. (rec. #37)

Install a **multi-use artificial turf field with lights at the Benson Centre** to enhance the site as a regional activity hub. This project should coincide with the removal of the football field from **Joe St. Denis Park**, for which future use options should be evaluated further. (rec. #38)



Other Park Amenities

Provide **playgrounds in selected new subdivisions** (e.g., East Ridge, Bellwood Ridge) based on a minimum threshold of one playground within 800-metres of residential areas. (rec. #32)

Install full municipal playgrounds in or **near Joe St. Denis Park and Terry Fox Memorial Park**. Increase the City's **annual budget for playground replacement**. (rec. #33)

Undertake resurfacing and lighting improvements at **all municipal tennis court sites**. (rec. #39)

Over the longer-term, pursue the development of a **dedicated pickleball complex** (supported by washrooms, shade, and nearby parking), possibly at the City-owned site on Saunders Drive and supported by a cost-sharing arrangement with user groups. (rec. #40)

Continue to promote the **volunteer ice rink program** and seek innovative models of recruiting and supporting volunteers. Track usage at each location to assess trends over time. (rec. #41)

Work with the skatepark sub-committee to explore locations and options for **replacing the existing skate park** at Optimist Park. (rec. #43)

Install a **splash pad (and support building) at Menard Park** to improve service to East Cornwall. (rec. #49)

Develop a municipal **off-leash dog park**, guided by a site evaluation exercise. (rec. #50)

Parkland – Selected Recommendations*

*Please see the Draft Master Plan for a full list of all recommendations

Parkland Policy and Needs

Review and update the City’s **cash-in-lieu land values** for parkland dedicated through the development process. (rec. #54)

In areas where the supply of parkland is adequate, **prioritize the use of development funds (cash-in-lieu) for parkland improvements**, rather than land acquisition. (rec. #55)

Formalize requirements for **parkland acceptability, design requirements, and developer responsibilities**. (rec. #56)

Establish a growth-related **parkland target** of 2.0 hectares per 1,000 residents to guide future provision. **Additional parkland** may be required to address growth-related needs, enhance public access to the waterfront, establish linear/trail connections, and/or expand existing community and city-wide parks where necessary. (rec. #57)



Park Activities and Renewal

Maintain a commitment to **universal accessibility, safety and comfort** within the City’s parks and trails system, including an emphasis on amenities such as washrooms, benches/seating areas, bike racks, and shade in appropriate parks. (rec. #62)

Support **outdoor education, stewardship and climate change mitigation initiatives** through the parks and open space system, such as tree plantings, naturalization efforts, community gardens, butterfly/pollinator parks, interpretive displays, and adopt-a-park/trail programs, in conjunction with community partners. (rec. #64)

Begin planning for **renewal and redevelopment projects** at:

- **Guindon Park** (see panel #10);
- **Lamoureux Park** (as recommended in the Waterfront Plan, such as lighting, signage, skating opportunities, beach volleyball, food/café services, etc.) ; and
- **the lands surrounding the Benson Centre** (sports field development and continued land assembly).

Each of these processes will require funding for design and further public consultation. (rec. #65)

Parkland – Selected Recommendations*

*Please see the Draft Master Plan for a full list of all recommendations

Guindon Park

Guindon Park is the City’s largest park and an under-leveraged resource. Phased implementation of the following improvements to Guindon Park are recommended. These options – many of which are supported by the 2019 Waterfront Plan – should be formalized by the development of a **Guindon Park Strategic Master Plan**. (see Appendix E)

Short-term recommendations include confirming the phasing and implementation of improvements through a Strategic Master Plan for Guindon Park, followed by high priority projects such as:

- safety audit;
- trail enhancements (e.g., extension, widening, signage, range of uses, etc.); if more trails are made multi-use, this could lead to a reduction in the need for enforcement;
- trail maintenance program, including collaborating with trail-based organizations;
- park promotion, including on-site maps/signage and online information;
- picnic area improvements, such as the addition of outdoor BBQs and a covered pavilion; and
- boat launch enhancements.

Medium-term recommendations (subject to further study; some may require partnerships with others) include:

- development of heritage and nature-based, educational programming and activities (e.g., outdoor learning centre);
- facilitation of special events to encourage broader use of the park;
- off-road connections to recreation path/waterfront trail;
- development of BMX skills park;
- beach improvements; and
- development of a campground (guided by a feasibility study).

Longer-term recommendations (subject to further study) include:

- floating playground;
- observation tower or deck; and
- stargazing area.



Putting the Master Plan into Action

Inclusive and affordable recreation and parks opportunities are essential to the health and wellness of Cornwall's residents and our broader community. Everyone benefits from participation in leisure activities and a well managed recreation and parks system provides tremendous social, environmental, and economic value.

The Recreation Master Plan recognizes these benefits and sets a course for the future with over 70 recommendations that will be used to guide budgets and key initiatives. The Plan enables the City and community to take stock, identify priorities, and work with others to address community needs.

As a guiding document, the Master Plan is:

- visionary and inspirational – some recommendations will require further consultation, funding, and/or partnerships; and
- technical and comprehensive – some recommendations can be put into action immediately.

Following the public review period, the Master Plan will be revised and presented to City Council for approval.

Please provide your input online by completing the feedback form or through the email link on the project website. The input deadline is March 7, 2021.

www.cornwall.ca/en/play-here/recreation-master-plan-update.aspx

Thank you for taking the time to review the material and provide your input!

