

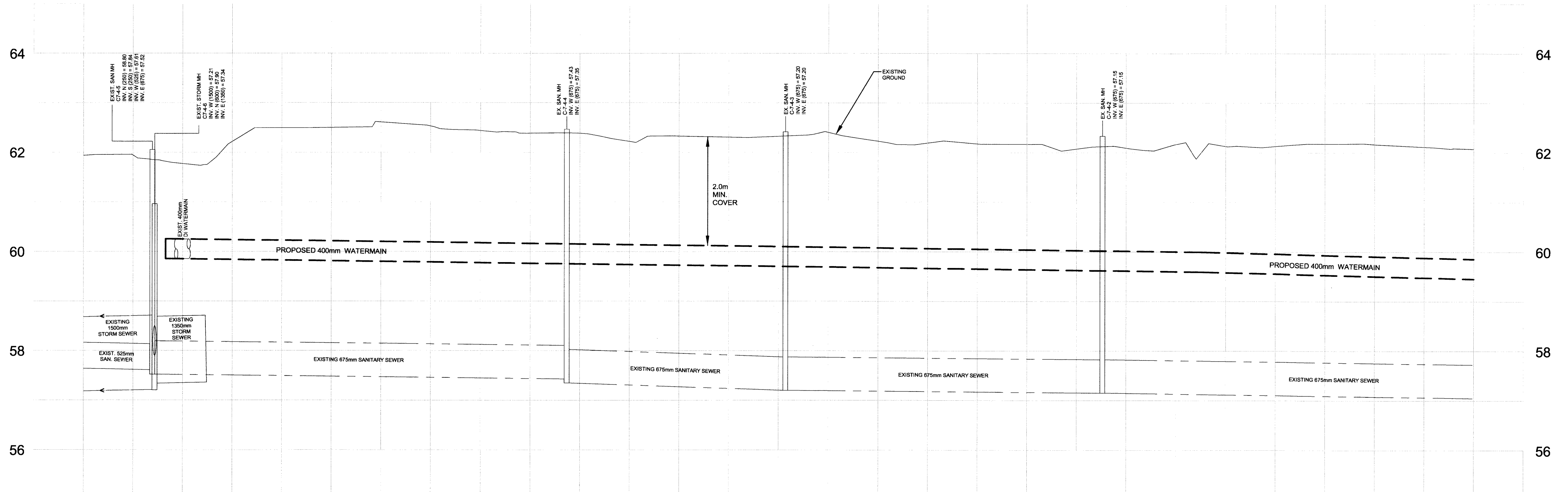
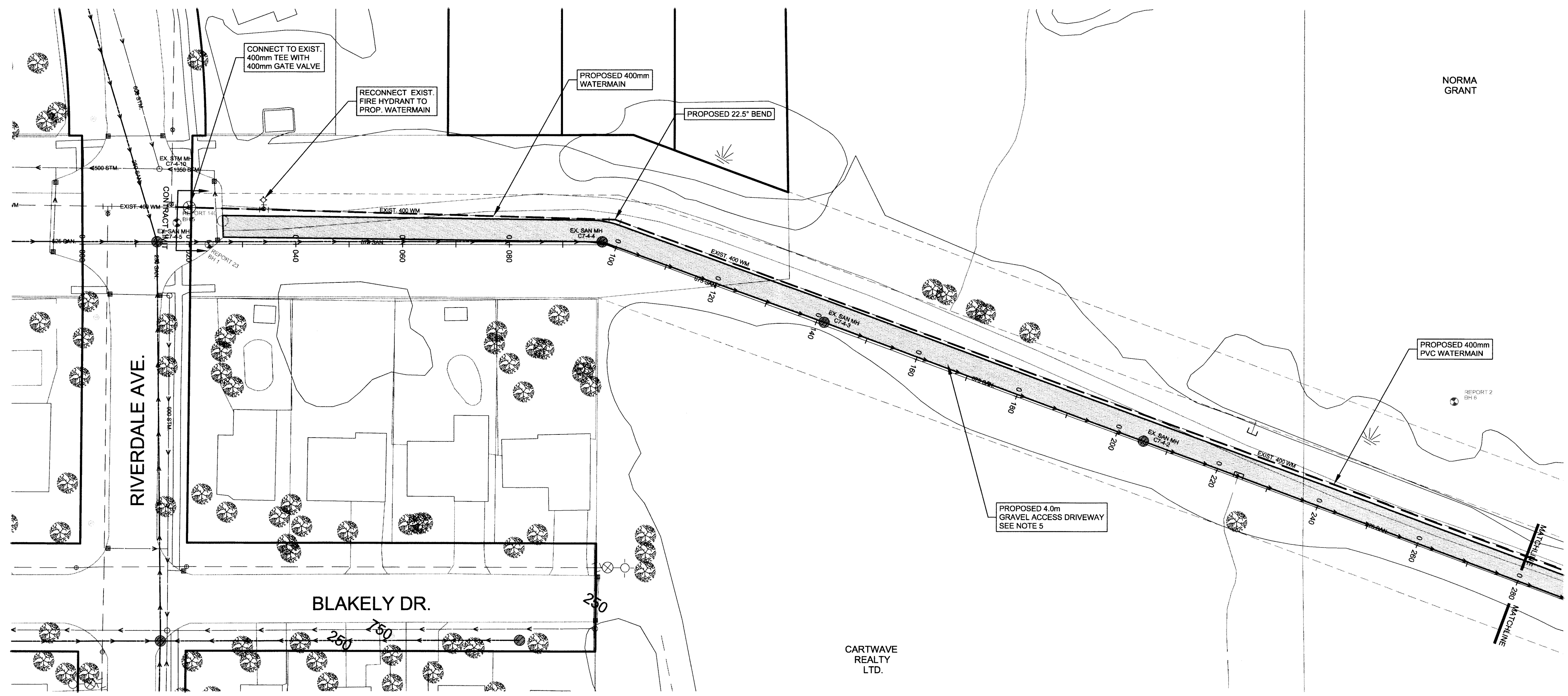


**A city with a world of possibilities**  
**Un monde de possibilités**

**WATERMAIN CONSTRUCTION ON FUTURE NINTH STREET EXTENSION  
FROM RIVERDALE AVENUE TO ROSEMOUNT AVENUE**

THE WORK FOR THIS PROJECT INVOLVES THE SUPPLY AND INSTALLATION OF APPROXIMATELY 1.6 km OF 400mm DIAMETER WATERMAIN WITH CASING PIPE UNDER CN SPUR LINES AS WELL AS THE INTALLATION OF 83m OF WATERMAIN ON THIRTEENTH STREET AT BROOKDALE AVENUE, INCLUDING SURFACE RESTORATION COMPLETE IN EVERY RESPECT.

# NINTH STREET EXTENSION WATERMAIN



EXISTING GROUND ELEVATION $\zeta$	61.94	61.94	61.72	62.22	62.48	62.50	62.61	62.53	62.44	62.38	62.38	62.22	62.33	62.31	62.32	62.40	62.23	62.19	62.18	62.17	62.07	62.08	62.17	62.13	62.13	62.18	62.17	62.12	62.07	EXISTING GROUND ELEVATION $\zeta$
PROPOSED TOP OF WATERMAIN				60.23											60.10								60.00					59.85	PROPOSED TOP OF WATERMAIN	
STATION	0+000	0+020	0+040	0+060	0+080	0+100	0+120	0+140	0+160	0+180	0+200	0+220	0+240	0+260	0+280	STATION														

- NOTES
- IT IS THE CONTRACTOR'S RESPONSIBILITY TO VERIFY THE LOCATION OF EXISTING UTILITIES PRIOR TO CONSTRUCTION.
  - BRACING OF POLES AND THE SUPPORTING OF DUCTS AND CONDUIT IS THE RESPONSIBILITY OF THE CONTRACTOR. REMOVAL OR RELOCATION OF POLES AND GUY WIRES SHALL BE DONE BY OTHERS.
  - MHS OR W/S IN CONFLICT WITH THE PROPOSED WORKS SHALL BE RAISED OR LOWERED AS REQUIRED BY THE ENGINEER.
  - CONTRACT LIMITS ARE APPROXIMATE ONLY. FINAL CONTRACT LIMITS MAY VARY SLIGHTLY AND SHALL BE DETERMINED IN THE FIELD.
  - GRANULAR ACCESS DRIVEWAY UNIT BID PRICE TO INCLUDE CLEARING AND GRUBBING OF EXISTING VEGETATION, STRIPPING OF TOPSOIL AND PLACEMENT AND COMPACTION OF 250mm GRANULAR 'B' AND 50mm GRANULAR 'A'.

**ISSUED FOR TENDER**

DATE: July 13, 2011

No.	DATE	BY	REVISION
-----	------	----	----------

TENDER No. **11-T49**



INFRASTRUCTURE AND MUNICIPAL WORKS DEPARTMENT  
ENGINEERING DIVISION

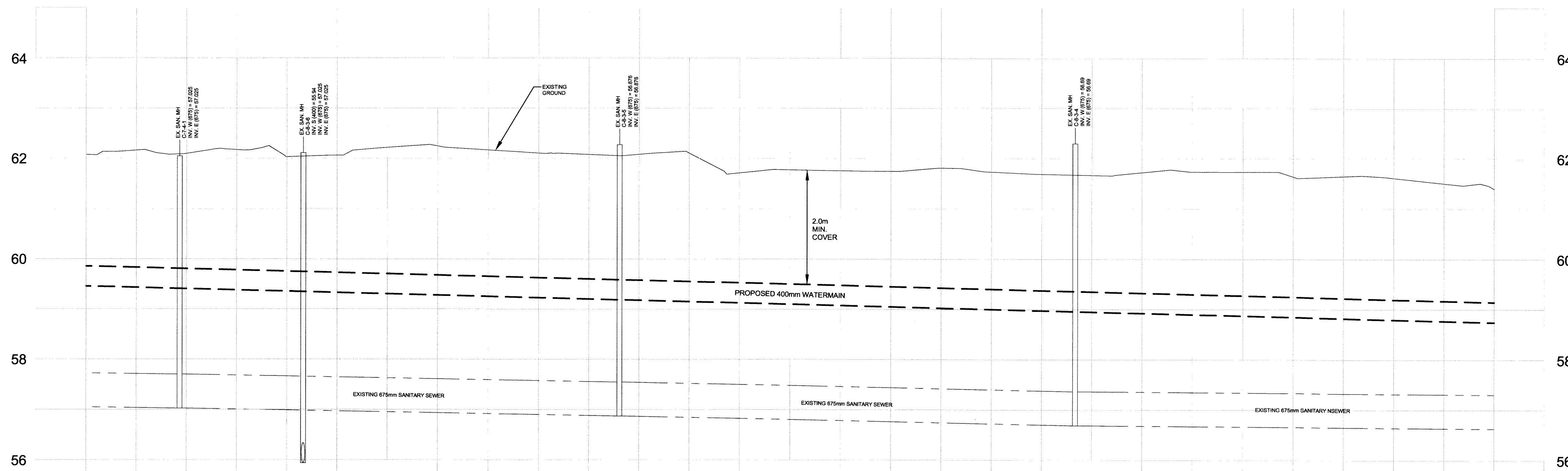
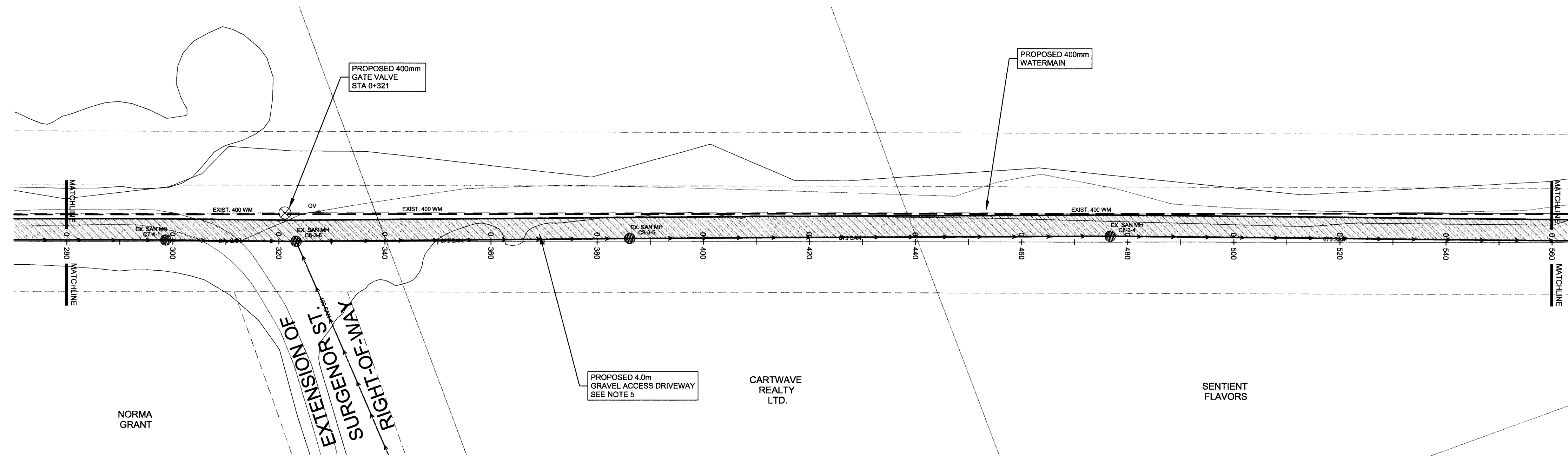
TITLE  
PROPOSED WATERMAIN CONSTRUCTION ON FUTURE NINTH STREET EXTENSION FROM RIVERDALE AVENUE TO STA 0+280

LEGEND

- SANITARY SEWER
- STORM SEWER
- WATERMAIN
- COMBINED SEWER
- GAS MAIN
- HYDRO
- BELL
- CATV

DRAWN BY: A.J. AUBIN	DESIGNED BY: G.P. STIDWILL
FIELD SURVEY: DW & AC	CHECKED BY: J. FAWTHROP
SCALE: Hor. 1:500 Vert. 1:50	DATE: JULY 5, 2011
FILE NO.: 404.07	DRAWING NO.: I

# NINTH STREET EXTENSION WATERMAIN



EXISTING GROUND ELEVATION $\zeta$	PROPOSED TOP OF WATERMAIN	STATION	EXISTING GROUND ELEVATION $\zeta$	PROPOSED TOP OF WATERMAIN	STATION
62.07	59.85	0+280	62.18		
62.09		0+300	62.17		
62.03		0+320	62.06		
62.22		0+340	62.17		
62.24		0+360	62.10		
62.08	59.60	0+380	62.08		
62.08		0+400	62.10		
61.71		0+420	61.71		
61.77		0+440	61.75		
61.75		0+460	61.73		
61.61		0+480	61.69		
61.73	59.35	0+500	61.67		
61.72		0+520	61.72		
61.74		0+540	61.64		
61.73		0+560	61.65		
61.64			61.62		
61.65			61.51		
61.62			61.40		

**ISSUED FOR TENDER**  
DATE: July 13, 2011

No.	DATE	BY	REVISION

TENDER No.



INFRASTRUCTURE AND MUNICIPAL WORKS DEPARTMENT  
ENGINEERING DIVISION

PROPOSED WATERMAIN CONSTRUCTION ON FUTURE NINTH STREET EXTENSION FROM STA 0+280 TO STA 0+560

LEGEND

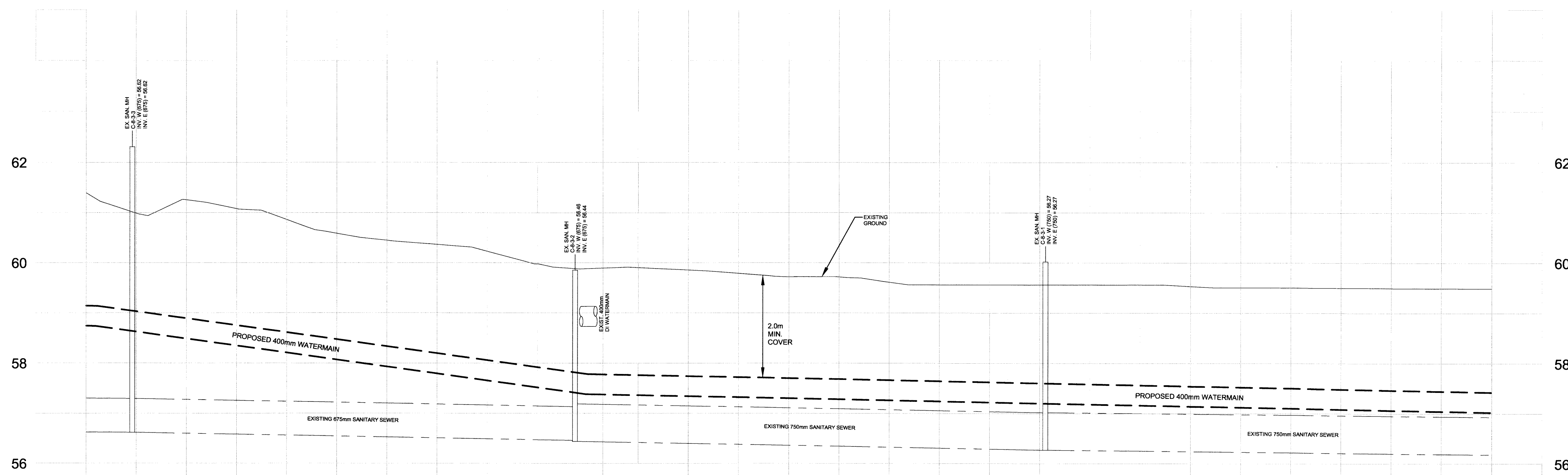
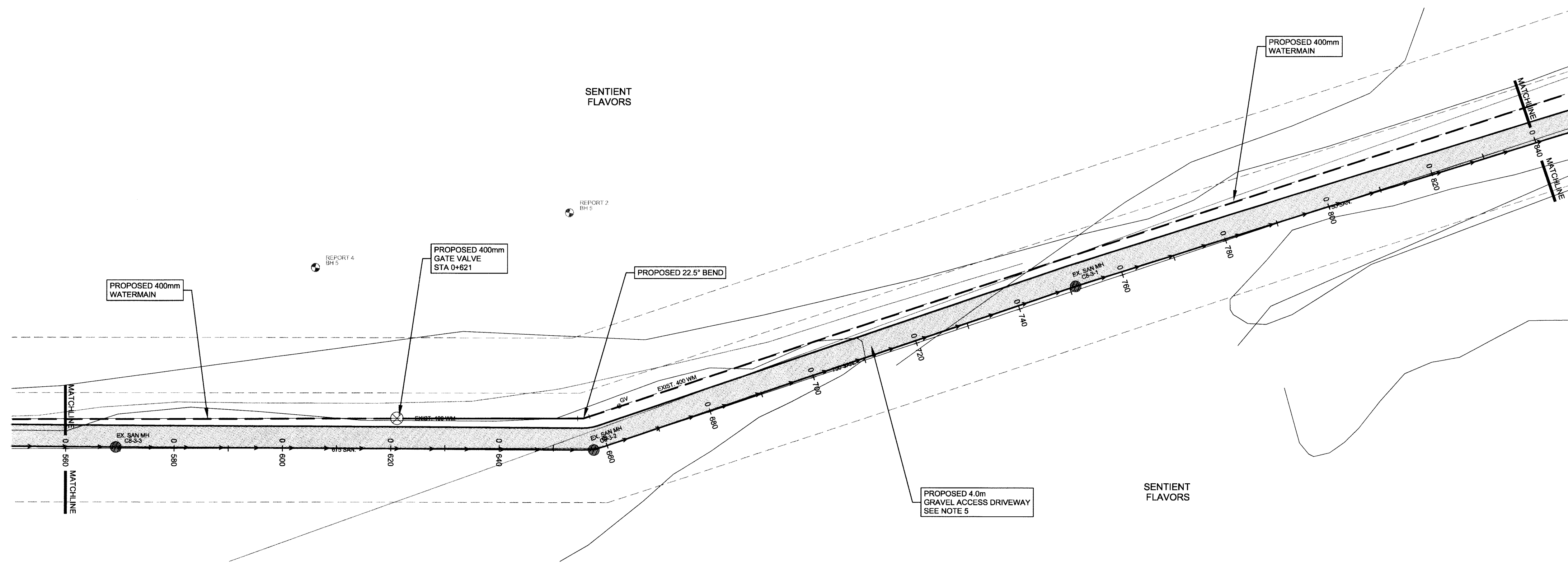
SANITARY SEWER	—○—
STORM SEWER	—○—
WATERMAIN	—●—
COMBINED SEWER	—●—
GAS MAIN	—+—
HYDRO	—x—
BELL	—□—
CATV	—x—



DRAWN BY: A.J. AUBIN	DESIGNED BY: G.P. STIDWILL
FIELD SURVEY: DW & AC	CHECKED BY: J. FAWTHROP
SCALE: Hor: 1:500 Vert: 1:50	DATE: JULY 5, 2011
FILE NO.: 404.08	DRAWING NO.: 2



# NINTH STREET EXTENSION WATERMAIN



EXISTING GROUND ELEVATION C <sub>1</sub>	0+560	0+580	0+600	0+620	0+640	0+660	0+680	0+700	0+720	0+740	0+760	0+780	0+800	0+820	0+840	EXISTING GROUND ELEVATION C <sub>1</sub>
PROPOSED TOP OF WATERMAIN	59.14					57.78					57.60				57.42	PROPOSED TOP OF WATERMAIN
STATION	0+560	0+580	0+600	0+620	0+640	0+660	0+680	0+700	0+720	0+740	0+760	0+780	0+800	0+820	0+840	STATION

**ISSUED FOR TENDER**

DATE: July 13, 2011

No. DATE BY REVISION

TENDER No.

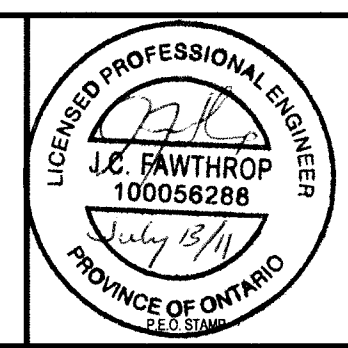


INFRASTRUCTURE AND MUNICIPAL WORKS DEPARTMENT  
ENGINEERING DIVISION

TITLE  
PROPOSED WATERMAIN CONSTRUCTION ON FUTURE NINTH STREET EXTENSION FROM STA 0+560 TO STA 0+840

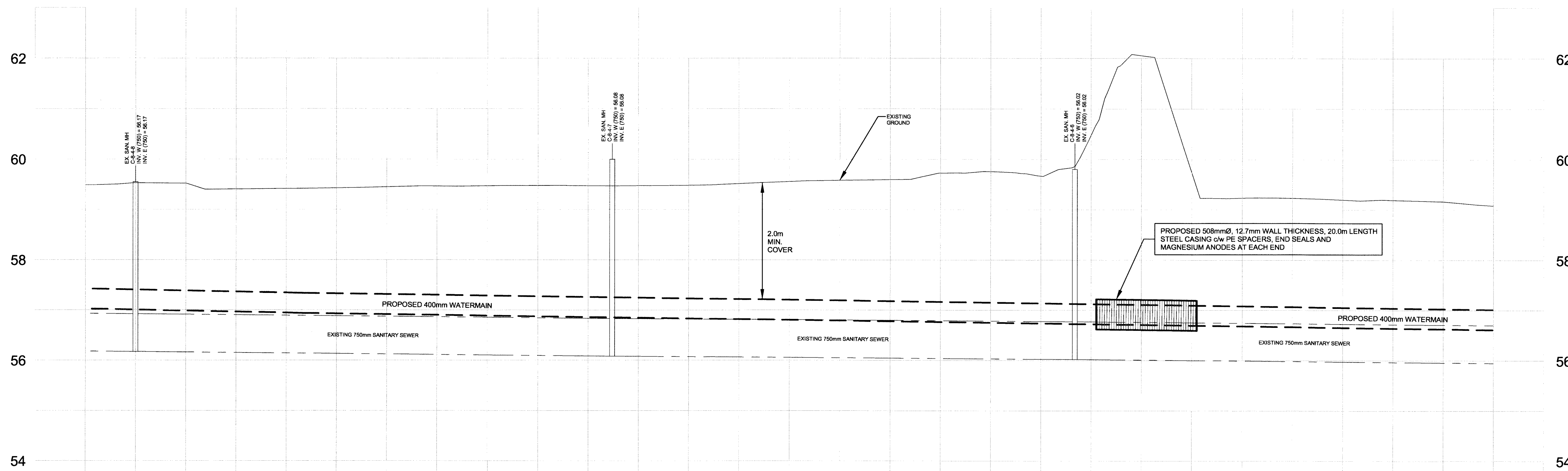
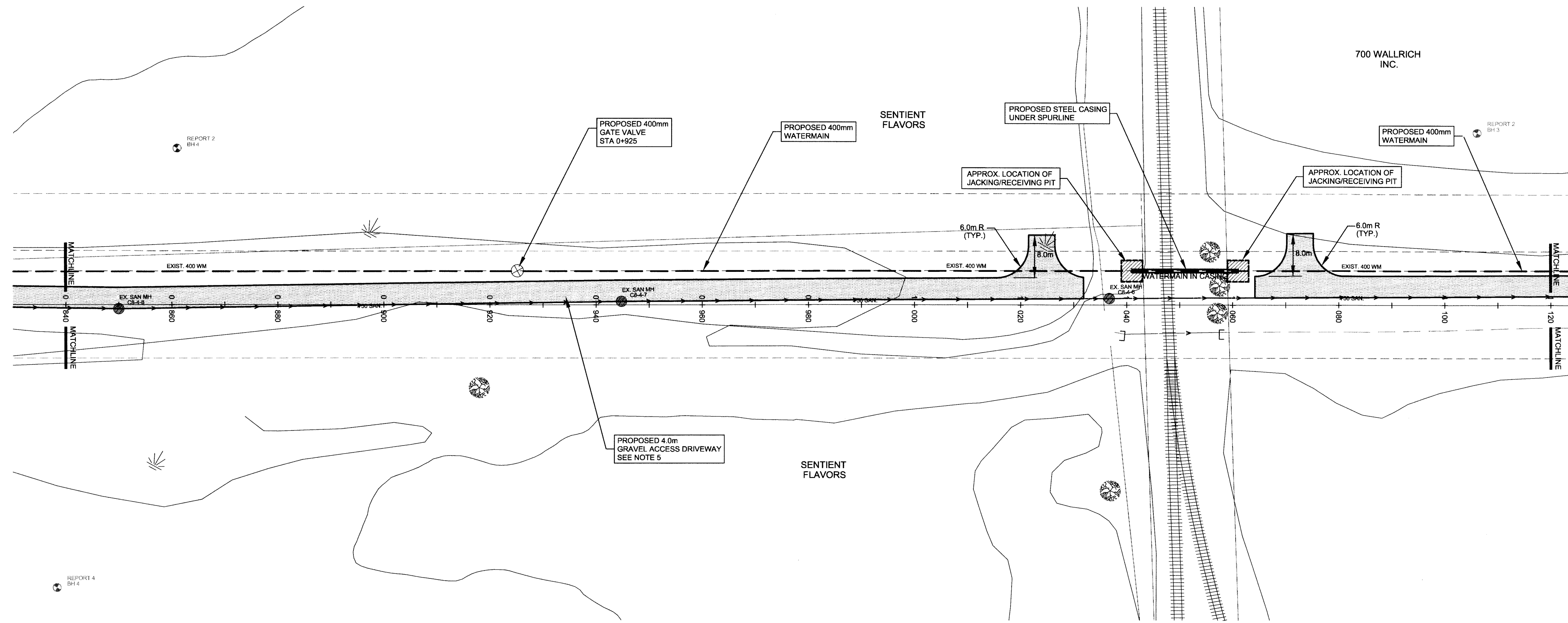
LEGEND

SANITARY SEWER	
STORM SEWER	
WATERMAIN	
COMBINED SEWER	
GAS MAIN	
HYDRO	
BELL	
CATV	



DRAWN BY: A.J. AUBIN	DESIGNED BY: G.P. STIDWILL
FIELD SURVEY: DW & AC	CHECKED BY: J. FAWTHROP
SCALE: Hor: 1:500 Vert: 1:50	DATE: JULY 5, 2011
FILE NO.: 404.09	DRAWING NO.: 3

# NINTH STREET EXTENSION WATERMAIN



EXISTING GROUND ELEVATION $C_g$	59.49	59.53	59.52	59.40	59.41	59.43	59.45	59.46	59.47	59.48	59.47	59.47	59.48	59.51	59.55	59.58	59.59	59.72	59.76	59.86	60.49	62.06	59.73	59.23	59.23	59.20	59.19	59.16	59.08	EXISTING GROUND ELEVATION $C_g$
PROPOSED TOP OF WATERMAIN	57.42				57.34												57.18												57.01	PROPOSED TOP OF WATERMAIN
STATION	0+840		0+860		0+880		0+900		0+920		0+940		0+960		0+980		1+000		1+020		1+040		1+060		1+080		1+100		1+120	STATION

**ISSUED FOR TENDER**  
DATE: July 13, 2011

No.	DATE	BY	REVISION
-----	------	----	----------

TENDER No.

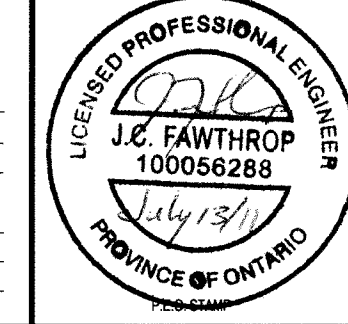


INFRASTRUCTURE AND MUNICIPAL WORKS DEPARTMENT  
ENGINEERING DIVISION

PROPOSED WATERMAIN CONSTRUCTION ON FUTURE NINTH STREET EXTENSION FROM STA 0+840 TO STA 1+120

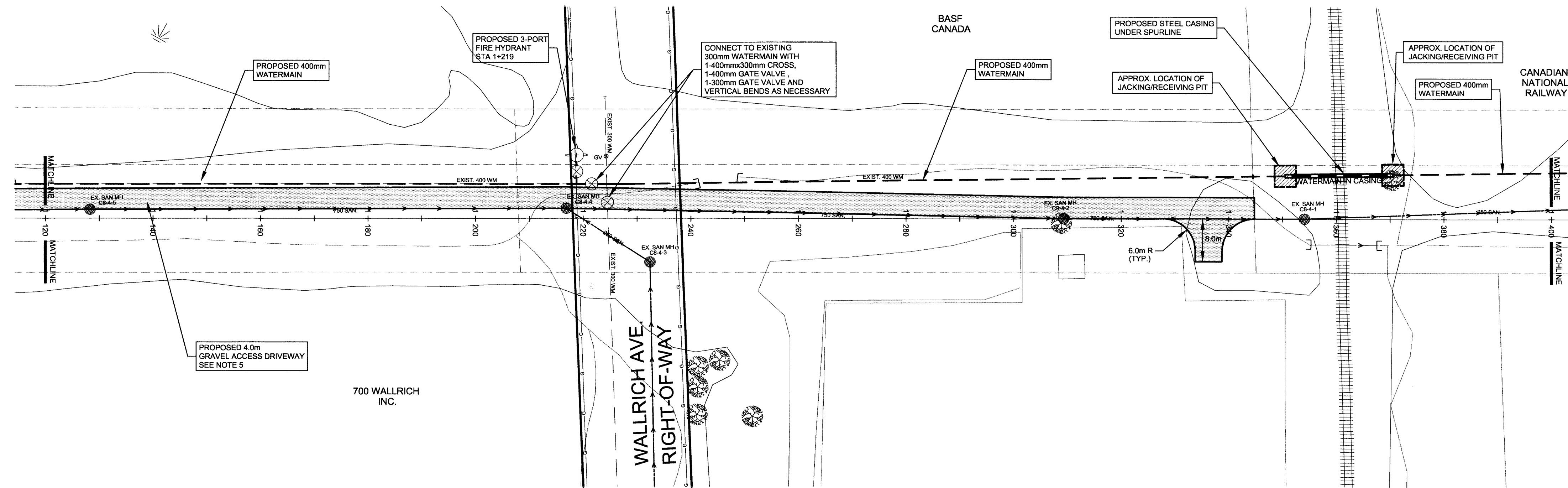
LEGEND

SANITARY SEWER	---
STORM SEWER	---
WATERMAIN	---
COMBINED SEWER	---
GAS MAIN	---
HYDRO	---
BELL	---
CATV	---



DRAWN BY: A.J. AUBIN	DESIGNED BY: G.P. STIDWILL
FIELD SURVEY: DW & AC	CHECKED BY: J. FAWTHROP
SCALE: Hor. 1:500 Vert. 1:50	DATE: JULY 5, 2011
FILE NO.: 404.10	DRAWING NO.: 4

# NINTH STREET EXTENSION WATERMAIN



**ISSUED FOR TENDER**

DATE: July 13, 2011

No. DATE BY REVISION

TENDER No.

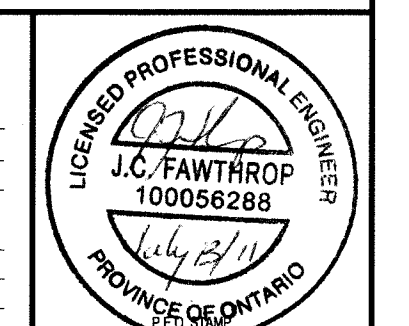


INFRASTRUCTURE AND MUNICIPAL WORKS DEPARTMENT  
ENGINEERING DIVISION

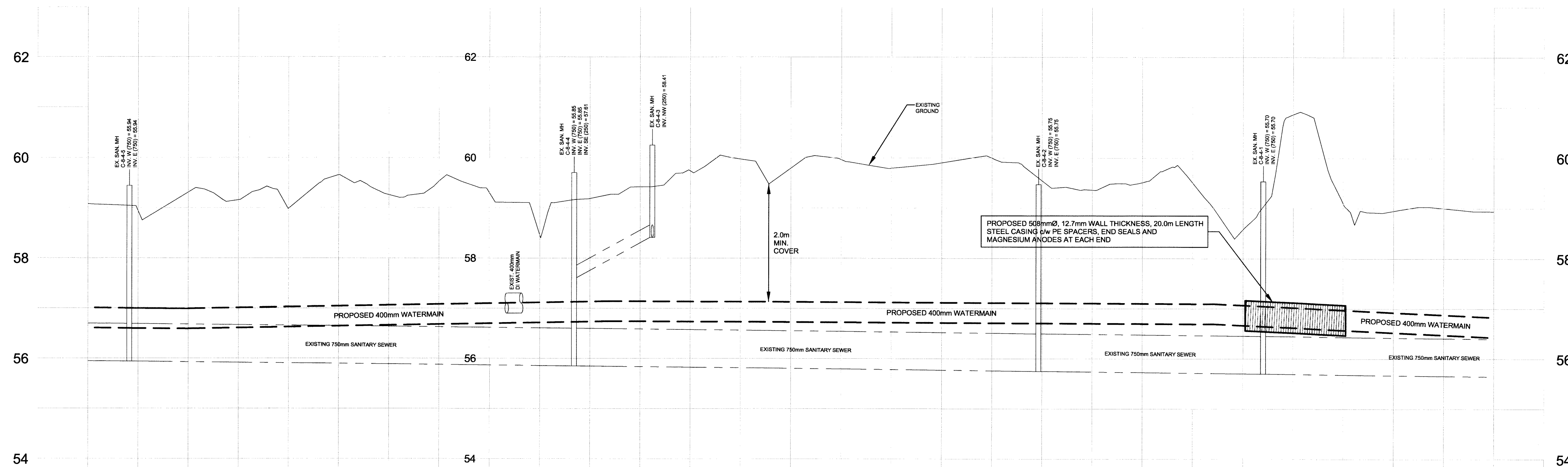
TITLE  
PROPOSED WATERMAIN CONSTRUCTION ON FUTURE NINTH STREET EXTENSION FROM STA 1+120 TO SAT 1+400

LEGEND

- SANITARY SEWER
- STORM SEWER
- WATERMAIN
- COMBINED SEWER
- GAS MAIN
- HYDRO
- BELL
- CATV



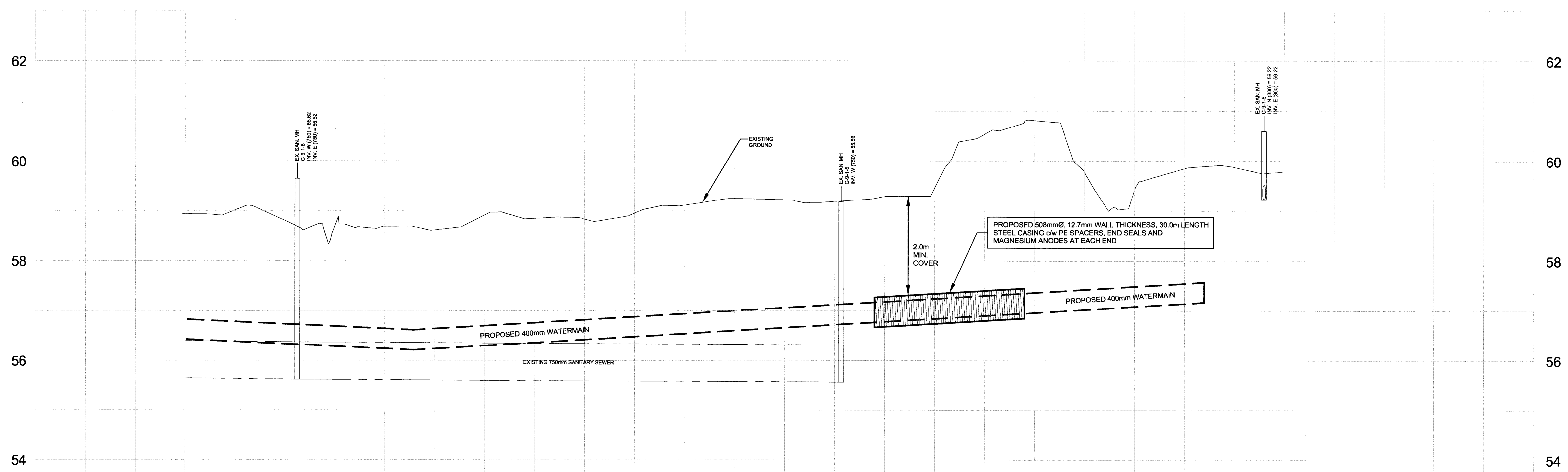
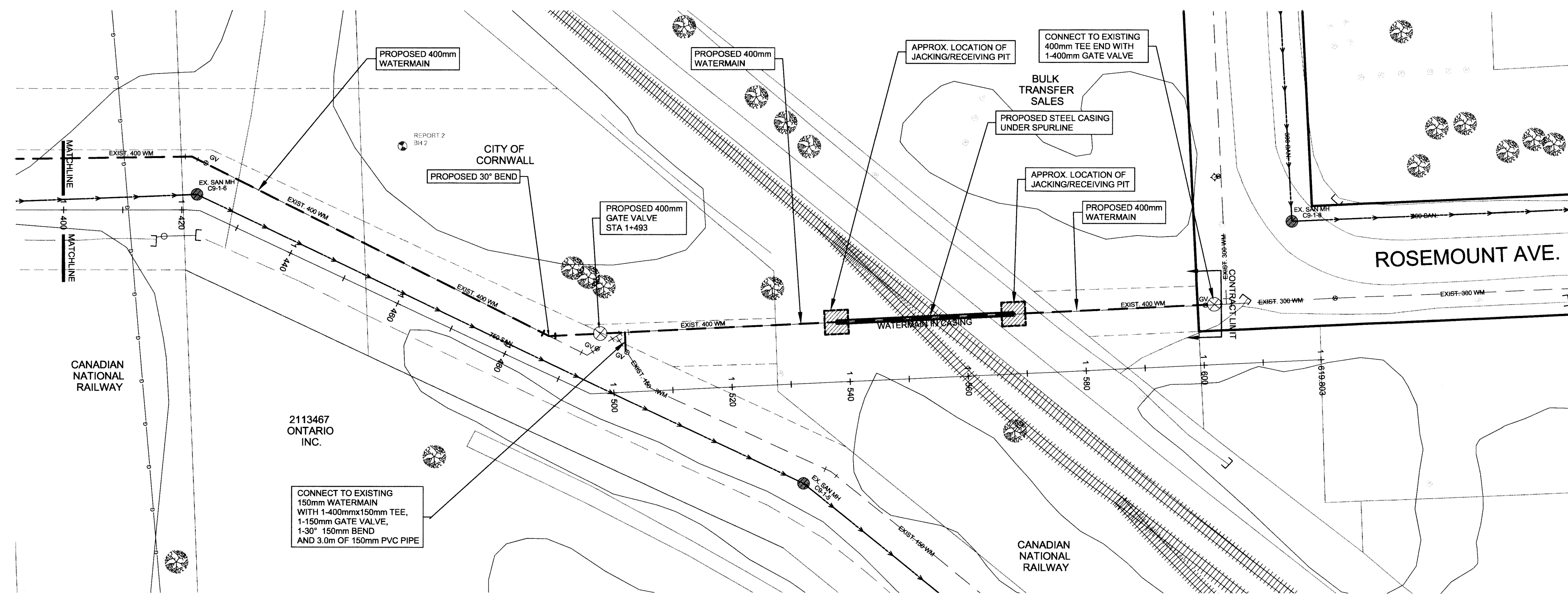
DRAWN BY: A.J. ALBIN      DESIGNED BY: G.P. STIDWILL  
 FIELD SURVEY: DW & AC      CHECKED BY: J. FAWTHROP  
 SCALE: Hor. 1:500      DATE: JULY 5, 2011  
 Ver. 1:50  
 FILE NO.: 404.11      DRAWING NO.: 5



EXISTING GROUND ELEVATION $\zeta$	59.08	59.04	59.31	59.16	59.99	59.86	59.26	59.53	59.30	59.46	59.18	59.42	59.74	59.97	59.79	59.96	59.79	59.90	60.00	59.54	59.38	59.51	59.50	59.57	59.86	59.08	59.95	59.00	59.84	EXISTING GROUND ELEVATION $\zeta$
PROPOSED TOP OF WATERMAIN	57.01											57.14												57.09					56.83	PROPOSED TOP OF WATERMAIN
STATION	1+120		1+140		1+160		1+180		1+200		1+220		1+240		1+260		1+280		1+300		1+320		1+340		1+360		1+380		1+400	STATION



# NINTH STREET EXTENSION WATERMAIN



EXISTING GROUND ELEVATION $\zeta$	PROPOSED TOP OF WATERMAIN	STATION	EXISTING GROUND ELEVATION $\zeta$	PROPOSED TOP OF WATERMAIN	STATION
58.94	56.83	1+400	58.80		1+420
59.02			58.71		
58.89			58.62	56.61	1+440
58.97			58.85		1+460
58.83			58.95		1+480
58.11			58.25		1+500
59.22	57.06	1+520	59.19		1+540
60.54			59.29		1+560
60.62			59.47		1+580
59.77			59.41		1+600
59.85	57.54	1+600	59.88		
59.78					

**ISSUED FOR TENDER**

DATE: *July 13, 2011*

No. DATE BY REVISION

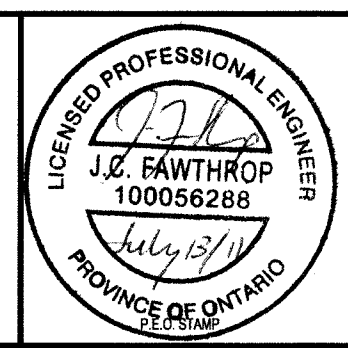
TENDER No.



INFRASTRUCTURE AND MUNICIPAL WORKS DEPARTMENT  
ENGINEERING DIVISION

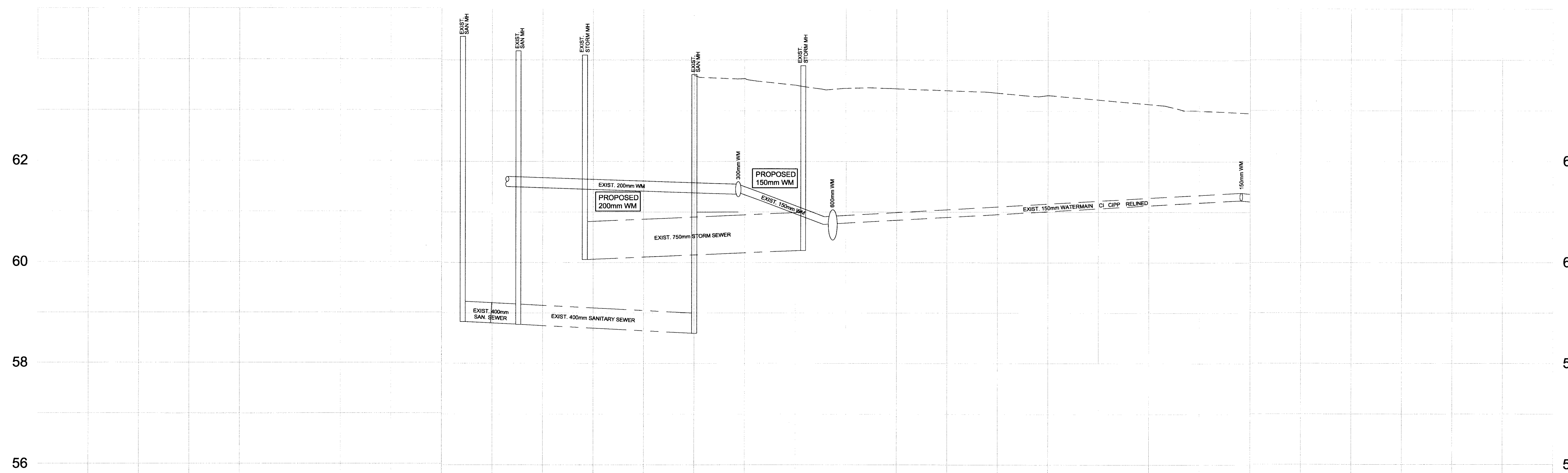
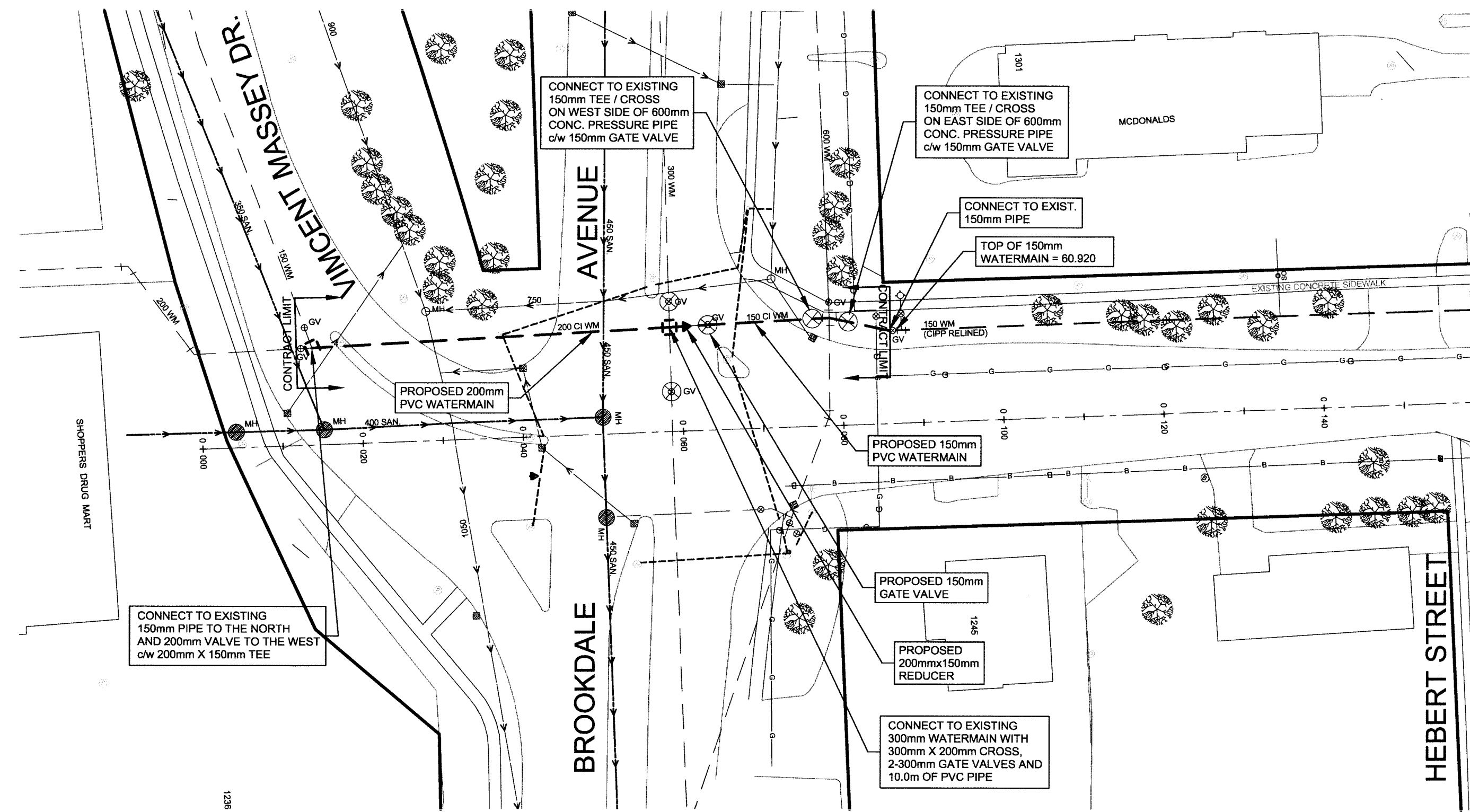
TITLE  
PROPOSED WATERMAIN CONSTRUCTION ON FUTURE NINTH STREET EXTENSION FROM STA 1+400 TO STA 1+600

- LEGEND
- SANITARY SEWER
  - STORM SEWER
  - WATERMAIN
  - COMBINED SEWER
  - GAS MAIN
  - HYDRO
  - BELL
  - CATV



DRAWN BY: A.J. AUBIN      DESIGNED BY: G.P. STODWILL  
 FIELD SURVEY: DW & AC      CHECKED BY: J. FAWTHROP  
 SCALE: Hor: 1:500      DATE: JULY 5, 2011  
 Vert: 1:50  
 FILE NO.: 404.12      DRAWING NO.: 6

# THIRTEENTH STREET



EXISTING GROUND ELEVATION $\zeta$	0+000	0+020	0+040	0+060	0+080	0+100	0+120	0+140	EXISTING GROUND ELEVATION $\zeta$
		63.70	63.50	63.14	63.35	63.22	63.00	62.93	62.84
EXISTING TOP OF WATERMAIN									EXISTING TOP OF WATERMAIN
STATION	0+000	0+020	0+040	0+060	0+080	0+100	0+120	0+140	STATION

**ISSUED FOR TENDER**

DATE: July 13, 2011

No. DATE BY REVISION

TENDER No.

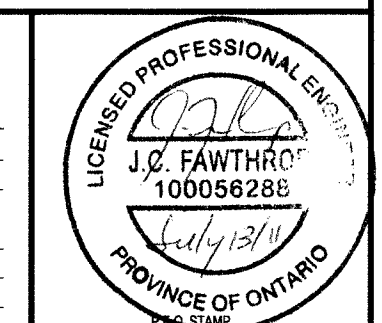


INFRASTRUCTURE AND MUNICIPAL WORKS DEPARTMENT  
ENGINEERING DIVISION

TITLE  
PROPOSED WATERMAIN CONSTRUCTION ON THIRTEENTH STREET W FROM VINCENT MASSEY DRIVE TO BROOKDALE AVENUE

LEGEND

SANITARY SEWER	
STORM SEWER	
WATERMAIN	
COMBINED SEWER	
GAS MAIN	
HYDRO	
BELL	
GATE	



DRAWN BY: A.J. AUBIN	DESIGNED BY: G.P. STIDWILL
FIELD SURVEY: DW & AC	CHECKED BY: J. FAWTHROP
SCALE: Hor. 1:500 Vert. 1:50	DATE: JULY 5, 2011
FILE NO.: 758.03	DRAWING NO.: 7